

**FOR RENT**



**Kolpa v|d Hoek**

Wilgenplaslaan 232  
3052 SL Rotterdam

Rent:  
€ 1.875,- per month

MAKELAARS ♦ TAXATEURS



# Features & specifications



Year of construction:	1966
Type:	apartment
Inhoud:	220 m <sup>3</sup>
Living area:	86 m <sup>2</sup>
Storage space:	6 m <sup>2</sup>
Energylabel:	D



## Description

A beautiful unfurnished 3-room apartment located on the 2nd floor of the apartment complex 'De Hildegarderde' in Schiebroek. The apartment complex is well maintained and has an own parking area. Schiebroek is characterized by its central location close to public transport, the highways such as the A20, A13 and A16. There are several parks in the immediate vicinity of the apartment, including the Wilgenplaspark, the Plaswijckpark and even a petting zoo De Wilgenhof. The Bergse Achterplas is also a stone's throw away from the apartment. In addition to the parks, the shopping streets on Teldersweg and Peppelweg are also within walking distance. The center of Rotterdam is about 15 minutes by bike.

### Ground floor:

Closed entrance with video intercom system, access to stairwell, two elevators and basement storage rooms.

### 2nd floor:

Entrance with a coat rack. From the entrance you enter the spacious living room. The bright living room is modernly furnished and has a direct connection to the kitchen. The kitchen is equipped with built-in appliances such as an oven, dishwasher, fridge-freezer, extractor hood, microwave and sink. From the living room you reach the two bedrooms through the hall. From the master bedroom you have access to the bathroom. The bathroom is equipped with a shower, washbasin with mirror and a washing machine connection. The apartment contains a nicely finished separate toilet.

The entire house is equipped with sufficient storage options. There is also a storage room on the ground floor of approx. 6 m<sup>2</sup>.



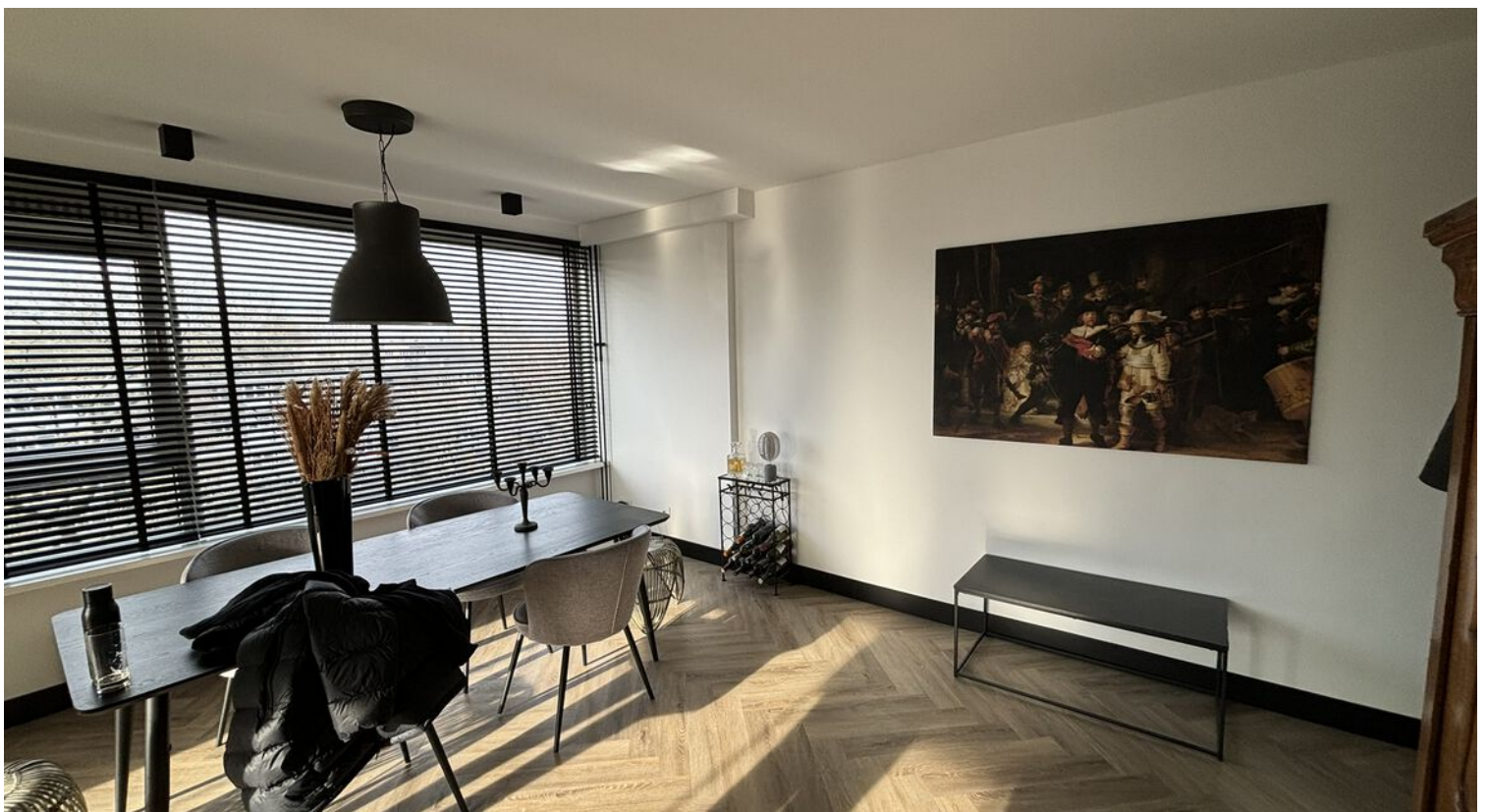
Particularities:

- living area approx. 86 m<sup>2</sup>;
- Unfurnished, fully furnished is optional;
- storage in the basement;
- parking on site;

Conditions:

- Minimum rental period: maximum 24 months;
- preferred starting date: in consultation;
- rental price correction: the rent and payment for furniture / fittings, fixtures and other equipment will be adjusted subsequently on an annual basis as provided the general terms and conditions, according to the numbers given by CBS;
- the costs for gas, water and electricity are not included in the rent and must be contracted by tenant directly with the utility companies;
- deposit: after consultation with landlord, with a minimum of 1 month.
- At additional cost there is an option to rent the apartment fully furnished.

While this information has been compiled with the utmost care, Kolpa Rental Services cannot be held liable for possible omissions or inaccuracies or the consequences thereof. All sizes and areas are indicative. The conditions of the Netherlands Association of Real Estate Brokers and Immovable Property Experts (NVM) apply.











# Location on map

