

FOR RENT



Kolpa v/d Hoek

Gustav Vasaborg 58
3124 TH Schiedam

Rent:
€ 2.100,- per month

MAKELAARS ♦ TAXATEURS

Features & specifications



Year of construction:	2005
Type:	apartment
Rooms:	4
Capacity:	670 m³
Living area:	182 m²
Balcony:	9 m²
External storage space:	6 m²
Heating:	central heating boiler
Insulation:	fully insulated
Energylabel:	B



Description

Very spacious, partly furnished 4-room apartment of approx. 180 m2 over 2 floors, located in beloved neighborhood Sveapark. The residential complex is located on the edge of a quiet, child-friendly residential area. The apartment, located on the 4th and 5th floor, has a wide view, a spacious balcony, a loggia and ceilings up to 5 meters height which ensure that the apartment feels like a large house.

The apartment is centrally located, within walking distance are shops for daily groceries as well as a bus station. Schiedam center and roads are just a few minutes away by car, including the A4, A20 and A13.

Details:

Ground floor; mailboxes and doorbells.
Closed entrance with access to the 2 elevators and stairs to the underground car park and apartments above.

4th floor;

Entrance apartment with meter cupboard, spacious hall with access to the living room of approx 47m2 with balcony of approx 9m2 and a wide view over the lands of Midden Delfland. Luxurious open kitchen which is equipped with appliances including: induction hob, extractor hood, fridge with separate freezer, dishwasher, combi-microwave and Nespresso machine. From the hall there is access to the toilet with wash basin and bedroom I with fixed cupboard. Stairs to 2nd floor.

5th floor;

Spacious landing with access to the bathroom, 2 bedrooms, storage room and washing machine-/boiler room. This floor has a ceiling of up to 5 meters high which gives a very spacious feeling. Bedroom II of approx. 20m2 with logia and vide which is accessible by a fixed staircase. Bedroom III of approx. 35m2. From the hallway acces to the storage, washing machine- and boiler room and spacious bathroom with walk-in shower, double sink, toilet and urinal.

Special features:

- including parking space in the underground parking garage;
- partly furnished;
- spacious apartment of approx. 180m².

Conditions:

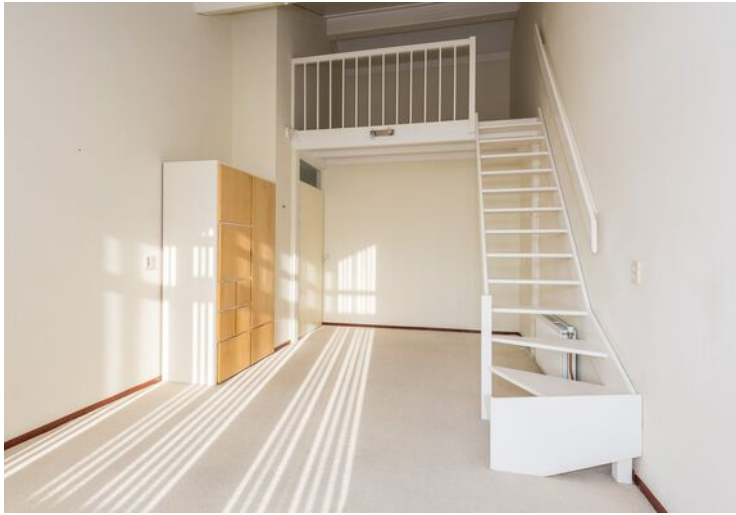
- Minimum rental period: 1 year;
- Preferred starting date: in consultation;
- Rental price correction: the rent and payment for furniture / fittings, fixtures and other equipment will be adjusted subsequently on an annual basis as provided the general terms and conditions, according to the numbers given by CBS;
- Utilities: the costs for gas, water and electricity are not included in the rent and must be contracted by tenant directly with the utility companies;
- Deposit: after consultation with landlord, with a minimum of 1 month.

While this information has been compiled with the utmost care, Kolpa Rental Services cannot be held liable for possible omissions or inaccuracies or the consequences thereof. All sizes and areas are indicative. The conditions of the Netherlands Association of Real Estate Brokers and Immovable Property Experts (NVM) apply.

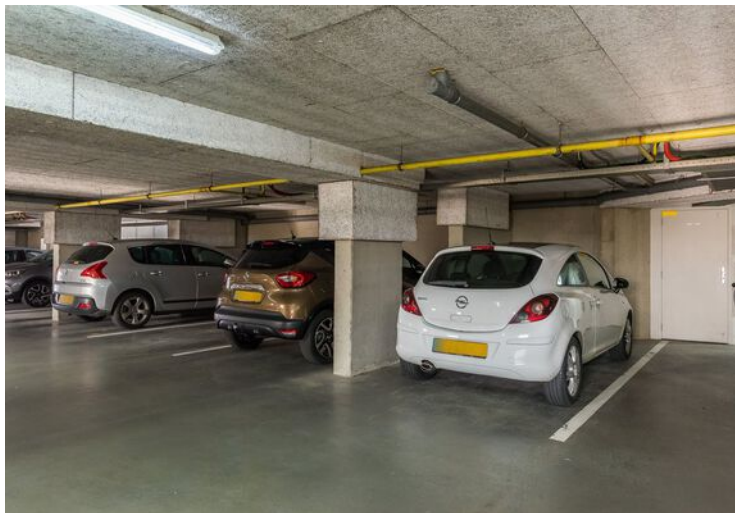














Floor plan 4th floor



Floor plan 5th floor



Location on map

