

FOR RENT



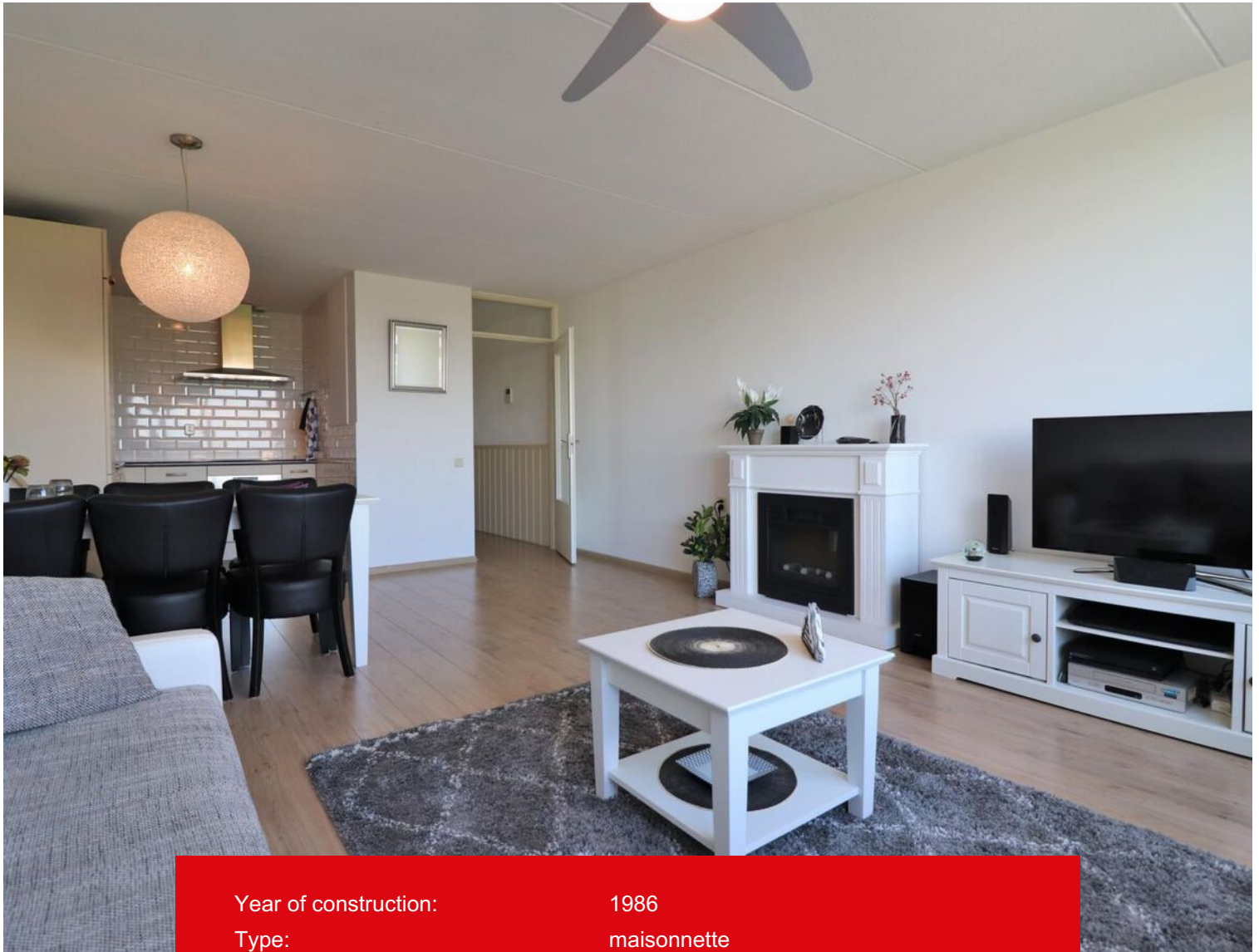
Kolpa v/d Hoek

Voermanweg 656
3067 JW Rotterdam

Rent:
€ 1.800,- per month

MAKELAARS ♦ TAXATEURS

Features & specifications



Year of construction:	1986
Type:	maisonnette
Rooms:	3
Capacity:	230 m ³
Living area:	72 m ²
Balcony:	6 m ²
Heating:	city heating
Insulation:	fully insulated
Energylabel:	A



Description

Fully furnished 3-room apartment spread over two floors with sunny balcony in a quiet but very central location.

The location is ideal with all kinds of facilities within walking and biking distance. There are several supermarkets, restaurants and stores around Alexandrium Shopping Center. Also a short distance from public transport (Rotterdam Alexander train station, a bus station and several metro stations). For the necessary relaxation, the Kralingse Bos can be visited or the green area around the Rottermeren. The location is also close to various highways.

Layout:

First floor:

Closed entrance with mailboxes, elevator and staircase to floors.

7th floor:

Entrance, landing with access to bedroom I and a storage room. Via the stairs the living floor can be reached.

6th floor:

Hallway with access to the remaining rooms. Spacious living room with open kitchen and access to the balcony (southwest). The kitchen is equipped with hob, combi-oven, dishwasher and fridge-freezer combination. There is a spacious second bedroom with closet. The bathroom is neat, fully tiled and equipped with shower, sink with cabinet, radiator and washing machine. There is a separate toilet.

Details:

- Furnished delivery;
- Energy label A;
- Very central location with various amenities within walking distance.

Lease terms:

- Lease term: minimum of 1 year;
- Rent effective date: directly available;
- Rent review: the rent will be increased annually by a percentage determined by the Central Bureau of Statistics (CBS), according to the provisions of the general provisions of the rental agreement housing;
- The costs of gas, water, electricity consumption, internet and television etc. are not included in the rent and should be settled directly with the utility company.
- Deposit: in consultation, minimum 1 month.

This information has been carefully compiled by Kolpa Rental Services. However, no liability is accepted for any incompleteness, inaccuracy or otherwise, or the consequences thereof. All dimensions and surface areas are indicative. The NVM conditions apply.









Location on map

