

FOR RENT



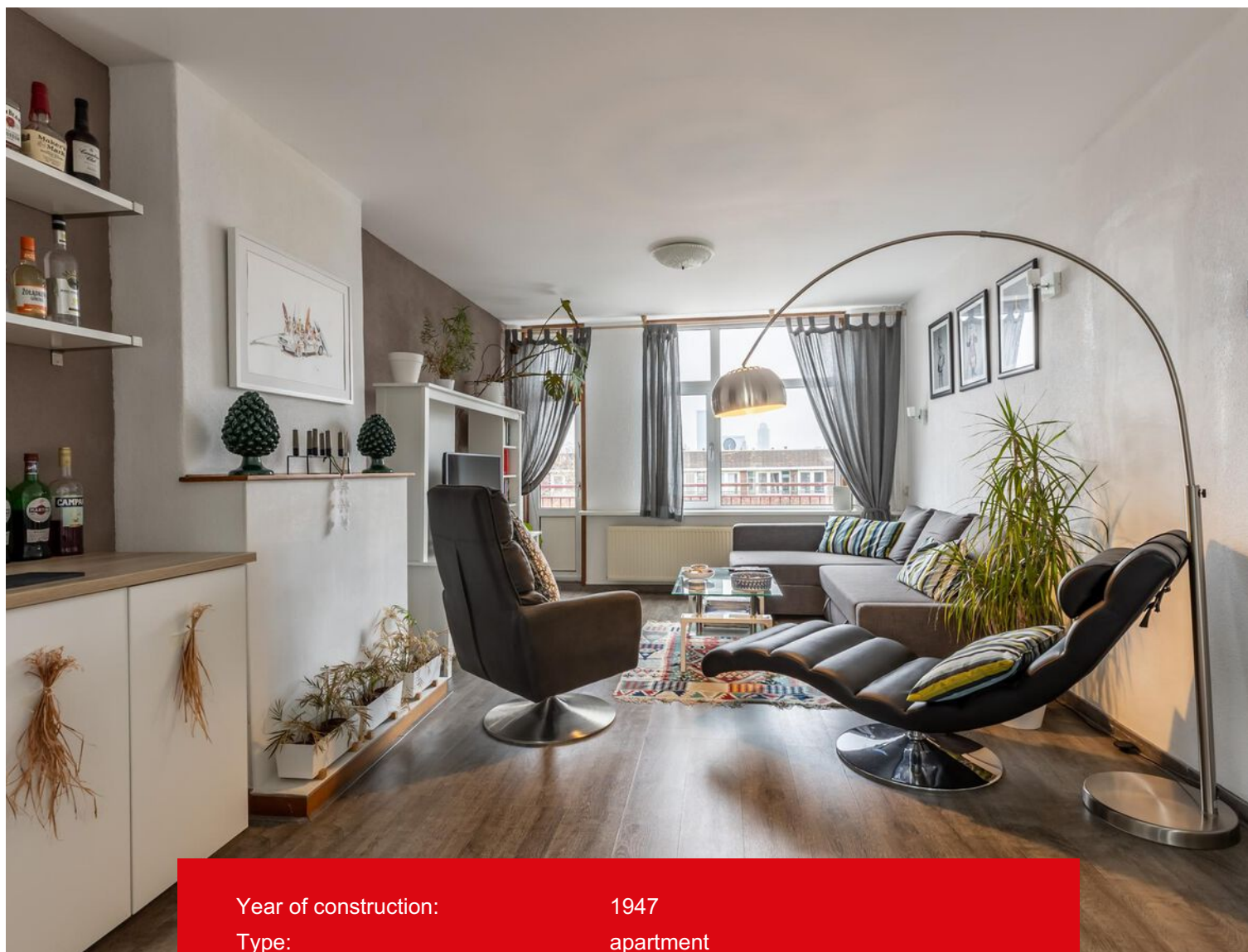
Kolpa v/d Hoek

Talmastraat 71 D
3038 SM Rotterdam

Rent:
€ 1.750,- per month

MAKELAARS ♦ TAXATEURS

Features & specifications



| | |
|-------------------------|--------------------|
| Year of construction: | 1947 |
| Type: | apartment |
| Rooms: | 3 |
| Capacity: | 185 m ³ |
| Living area: | 70 m ² |
| External storage space: | 5 m ² |
| Balcony: | 6 m ² |
| Energylabel: | D |



Description

Furnished 3-room apartment in the popular green district Bergpolder, edge Blijdorp. The apartment features a bright living room, 2 bedrooms and a balcony. Numerous facilities are located in the immediate vicinity. You will find public transport, restaurants, stores and highways really close to the apartment. Park Noorderhavenkade and the Vroesenpark is great for walking and recreation. Despite the quiet residential area you are in a short time in the middle of the bustling city centre.

A short distance from the apartment is Metrostation Blijdorp, streetcar stop Schieweg and several stores for daily shopping. Central Station and the dynamic center of Rotterdam are within cycling distance. The A13/A20 motorways can be reached within a few minutes.

Layout:

Ground floor:

Enclosed porch with stairs to the floors and access to the basement storage.

4th floor:

Entrance hall with access to the various rooms. The living room is spacious with space a large sitting and dining area. The kitchen is equipped with various appliances such as fridge, oven, induction hob with extractor hood and dishwasher and has access to the balcony. There are two bedrooms of which bedroom II is set up as a workplace. Modern bathroom with shower, sink, towel radiator and toilet.

On the first floor is the storage room.

Details:

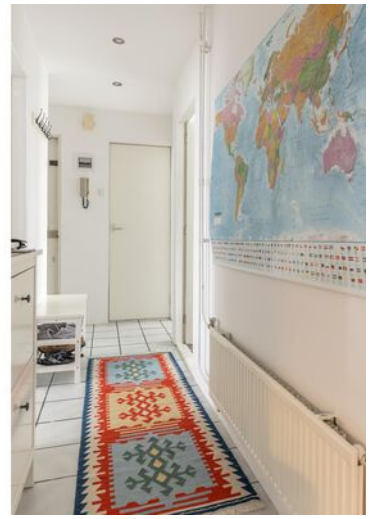
- Fully furnished;
- On the 4th floor, without elevator;
- Located in Blijdorp within cycling distance of the train station.

Conditions:

- rental period: maximum 24 months;
- preferred starting date: 1st of April 2024;
- rental price correction: the rent and payment for furniture / fittings, fixtures and other equipment will be adjusted subsequently on an annual basis as provided the general terms and conditions, according to the numbers given by CBS;
- the costs for city heating, water, electricity, internet, telephone and TV are not included in the rent and must be contracted by tenant directly with the utility companies and providers;
- deposit: after consultation with landlord, with a minimum of 1 month;

While this information has been compiled with the utmost care, Kolpa Rental Services cannot be held liable for possible omissions or inaccuracies or the consequences thereof. All sizes and areas are indicative. The conditions of the Netherlands Association of Real Estate Brokers and Immovable Property Experts (NVM) apply.











Location on map

