

FOR RENT



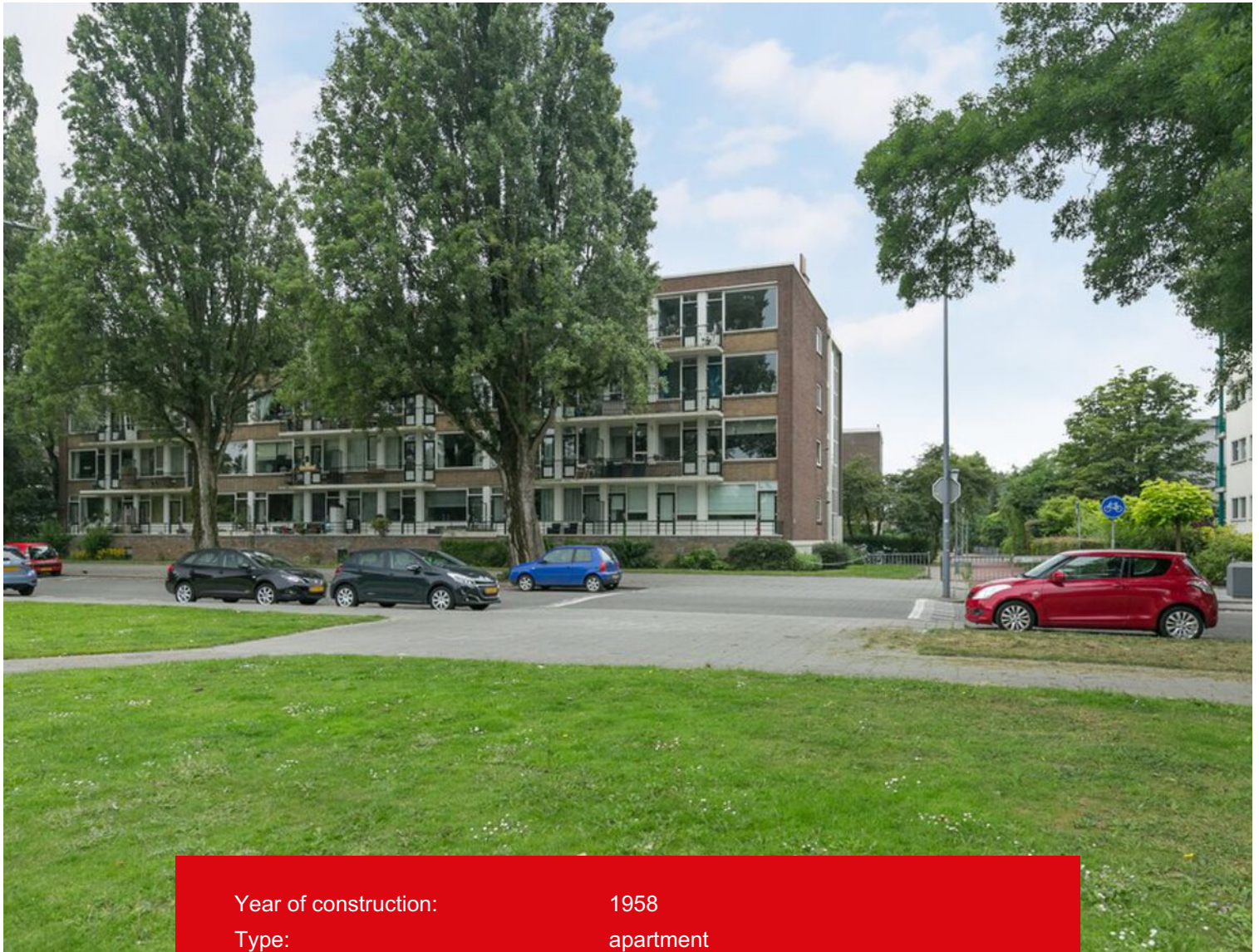
Kolpa v|d Hoek

Molenstraat 40
3052 XD Rotterdam

Rent:
€ 1.200,- per month

MAKELAARS ♦ TAXATEURS

Features & specifications



Year of construction:	1958
Type:	apartment
Rooms:	3
Capacity:	170 m ³
Living area:	63 m ²
Balcony:	3 m ²
External storage space:	8 m ²
Heating:	central heating system
Insulation:	roof insulation, double glass
Energylabel:	E



Description

A modern and cozy, fully furnished, 3-room apartment on the fourth floor overlooking a large park in one of the child-friendly neighborhoods of Schiebroek. Within walking distance Plaswijckpark and the Berg- and Broekpark and a bustling shopping street at Peppelweg with many shops. Several bus stops are easy to reach, making you within 10 minutes in the heart of Rotterdam. Via the A20 and A16 you can go different directions, so within 30 minutes you are in Dordrecht or The Hague.

Layout:

Ground floor:

Closed entrance, mailboxes and stairs to the floors.

4th floor:

Entrance, hall, toilet. An attractive living room with a spacious sitting / dining area with a beautiful laminate floor. From the living room you have access to the balcony with beautiful views over the park. Through the living room you also have access to the modern kitchen with various appliances, such as a gas hob, extractor, fridge and a closet with a washing machine connection. Through the landing you enter bedroom I approx. 3.82 x 3.64 m and bedroom II approx. 2.90 x 2.26 m of which 1 has a closet. Bathroom with shower cabin, washbasin, design radiator and a second washing machine connection.

Special features:

- Property is fully furnished;
- Situated in a quiet and child-friendly location;
- Beautiful view;
- Near the A20 and A16.

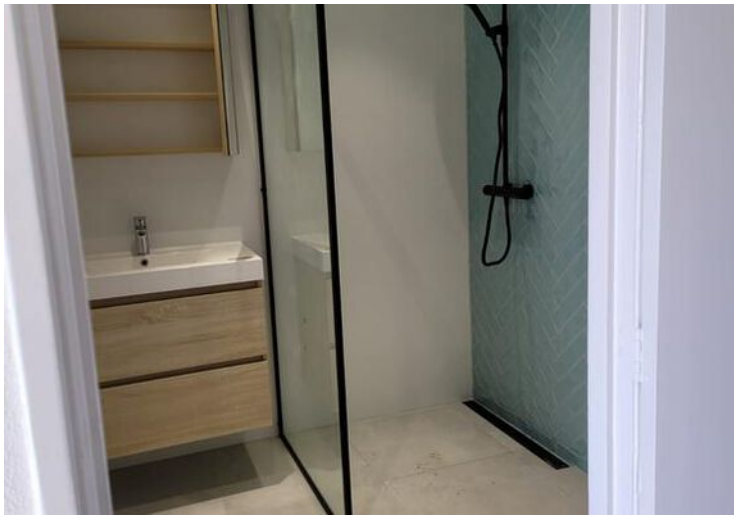
Conditions:

- Minimum rental period: 1 year;
- preferred starting date: per direct
- rental price correction: the rent and payment for furniture / fittings, fixtures and other equipment will be adjusted subsequently on an annual basis as provided the general terms and conditions, according to the numbers given by CBS;
- the costs for gas, water and electricity are not included in the rent and must be contracted by tenant directly with the utility companies;
- deposit: after consultation with landlord, with a minimum of 1 month.

While this information has been compiled with the utmost care, Kolpa Rental Services cannot be held liable for possible omissions or inaccuracies or the consequences thereof. All sizes and areas are indicative. The conditions of the Netherlands Association of Real Estate Brokers and Immovable Property Experts (NVM) apply.









Location on map

